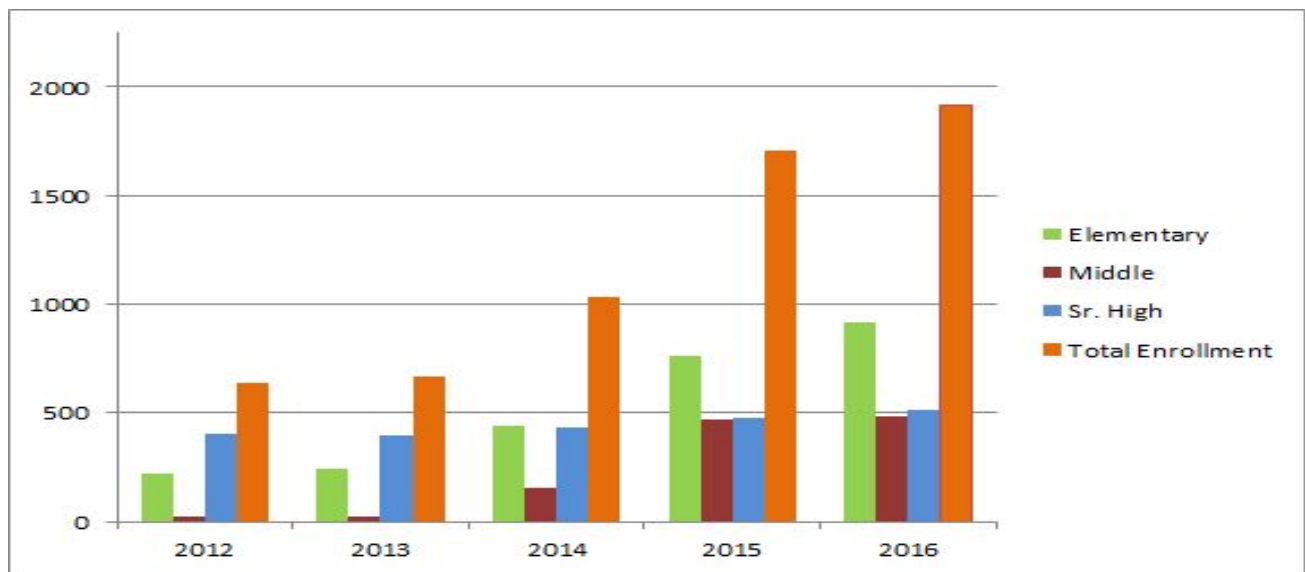


Raymore-Peculiar School District Summer School Enrollment History 2012-2016

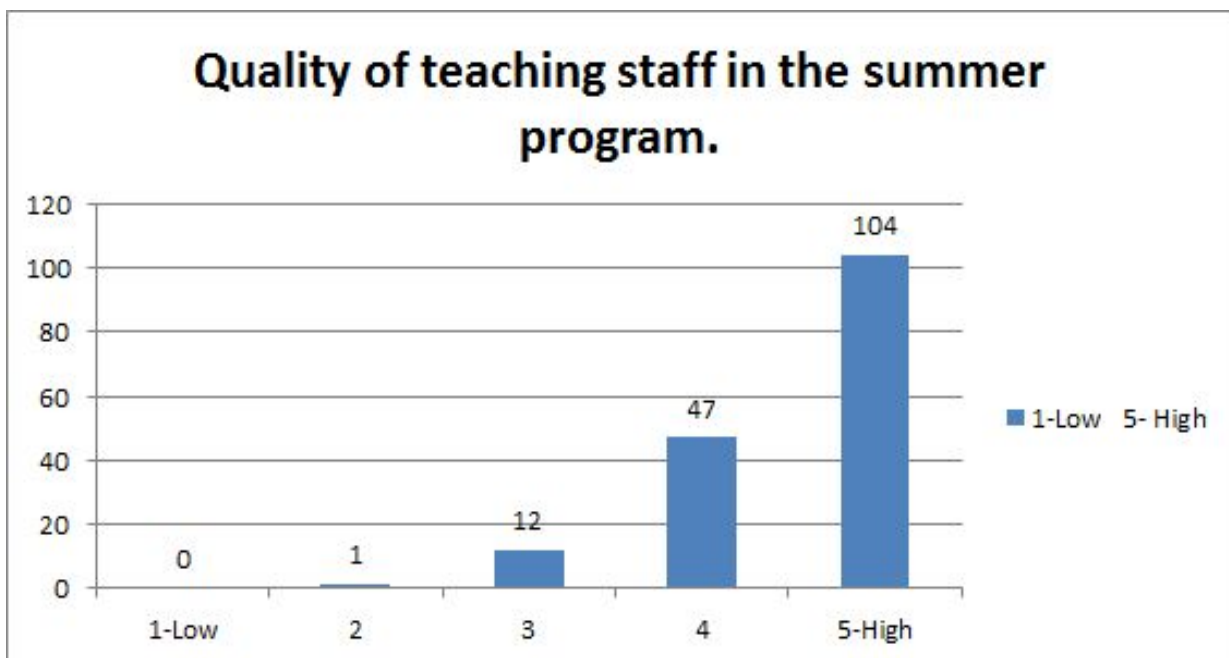
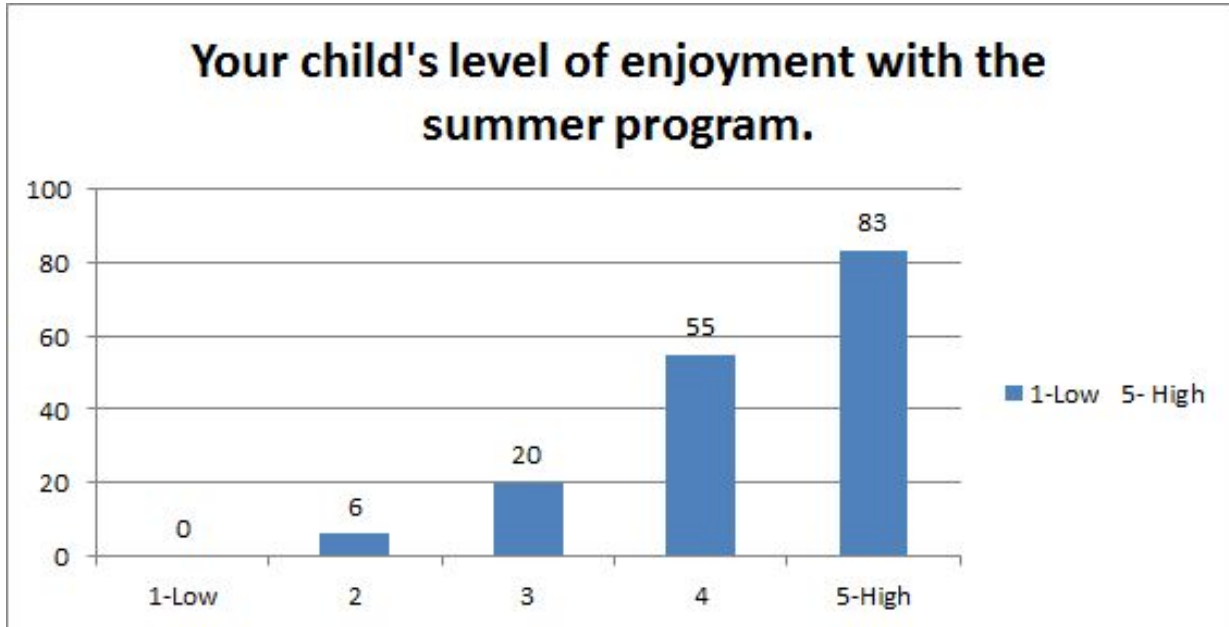
	2012	2013	2014	2015	2016
Elementary	219	246	440	761	917
Middle (5-8)	22	26	157	471	484
Sr. High	400	395	434	476	512
Total Enrollment	641	667	1031	1708	1913



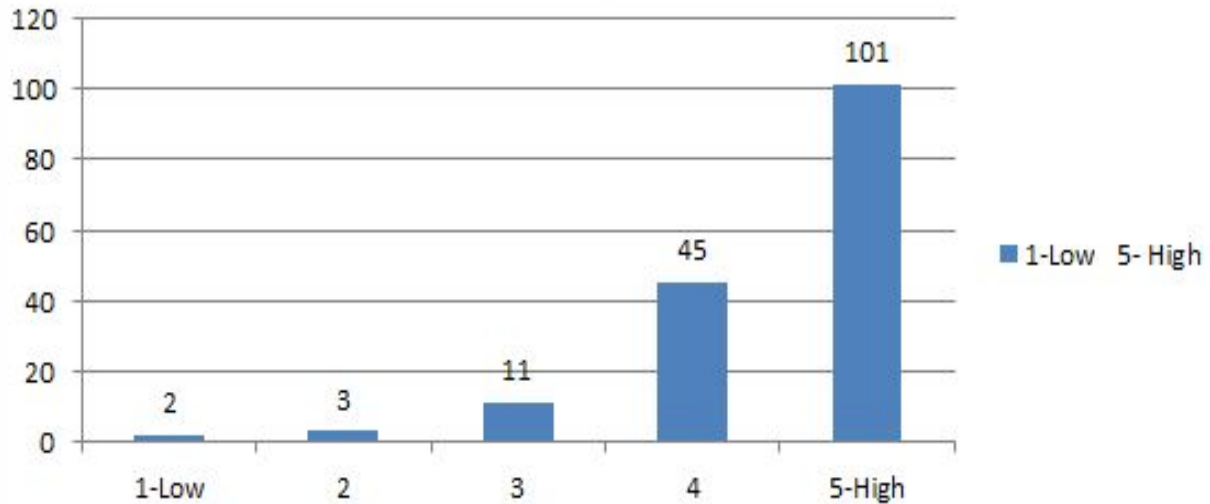
	2012	2013	2014	2015	2016
Total Teachers	39	42	61	102	124

Summer School Parent Survey 2016

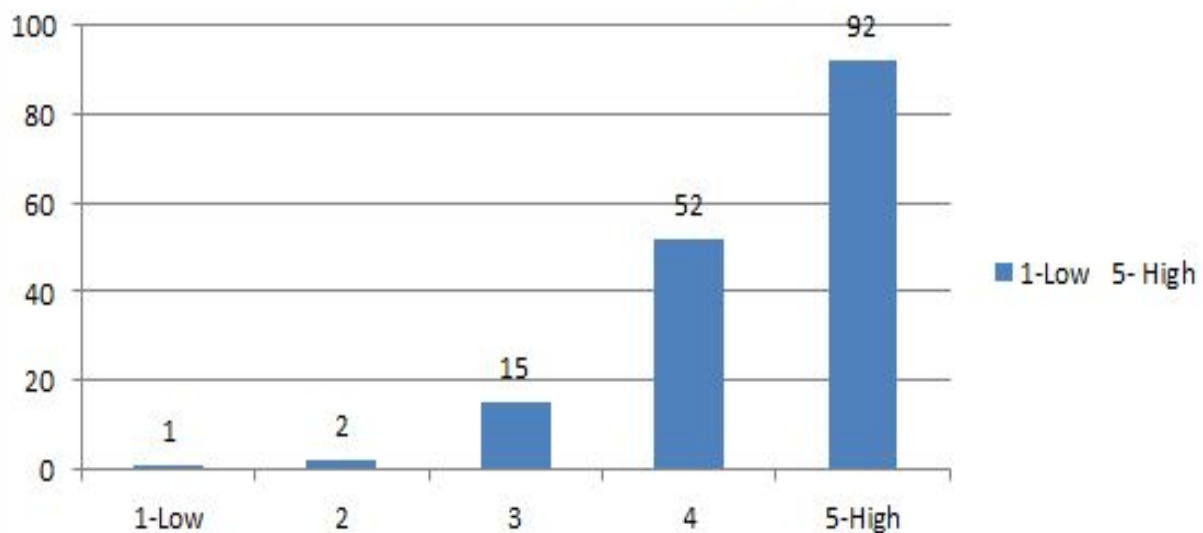
A brief survey was sent electronically to all parents who participated in the summer school program. There were 164 respondents. The feedback will be reviewed by the summer school planning committee this fall.



Quality of administrative staff in the summer program.



Quality of educational programming/classes offered in the summer program.



Overall quality of the summer program.

