

Change Orders

April 28, 2017

Phase 2 – Crossland Construction Company

- 10 Change Orders

AV Package – Progressive Electronics

- 1 Change Order



Phase 2 – Crossland Construction

➤ **COR 14 – Water Meters and Vaults**

➤ Change in Scope

➤ Smaller Valves

- Deletion of Water Meter Vaults

- Deletion of Sump Pumps

- Deletion of Power Supply

- Addition of Meter Pits

➤ **Savings of \$60,482**



Phase 2 – Crossland Construction

➤ **COR 15 – Demolition Changes**

- Locker Demo/Painting
- Ceiling Rework to Accommodate Ductwork (600 Wing)
- Reuse of Concession Door
- Existing Doors (504 Room)
- Vestibule Demo
- **Additional Cost of \$19,850**



Phase 2 – Crossland Construction

➤ **COR 16 – Fire Alarm**

➤ Updates to Weight Room/Locker Rooms


➤ Not originally included in specifications

➤ Needed by code

➤ **Additional Cost of \$57,736**



Phase 2 – Crossland Construction

- **COR 17 – Electrical**
 - Track Fixtures (art rooms)
 - Computer Tables (labs)
 - Combo Oven Power (life-skills)
 - AV Rough Combined (discrepancy)
 - **Additional Cost of \$11,186**
- 



Phase 2 – Crossland Construction

- **COR 18 – Mechanical**

- Freshman Entry

- Duct Reconfiguration (beam conflict)

- Unit Heater Relocation

- **Additional Cost of \$3,000**



Phase 2 – Crossland Construction

➤ **COR 19 – Finishes**

- Kitchen Floor VCT Deletion
- Life Skills Carpet Modification (subtle)
- Freshman Lounge and Hall Carpet
- Additional Lintel in NE Stairwell Window
- **Savings of \$1,157**



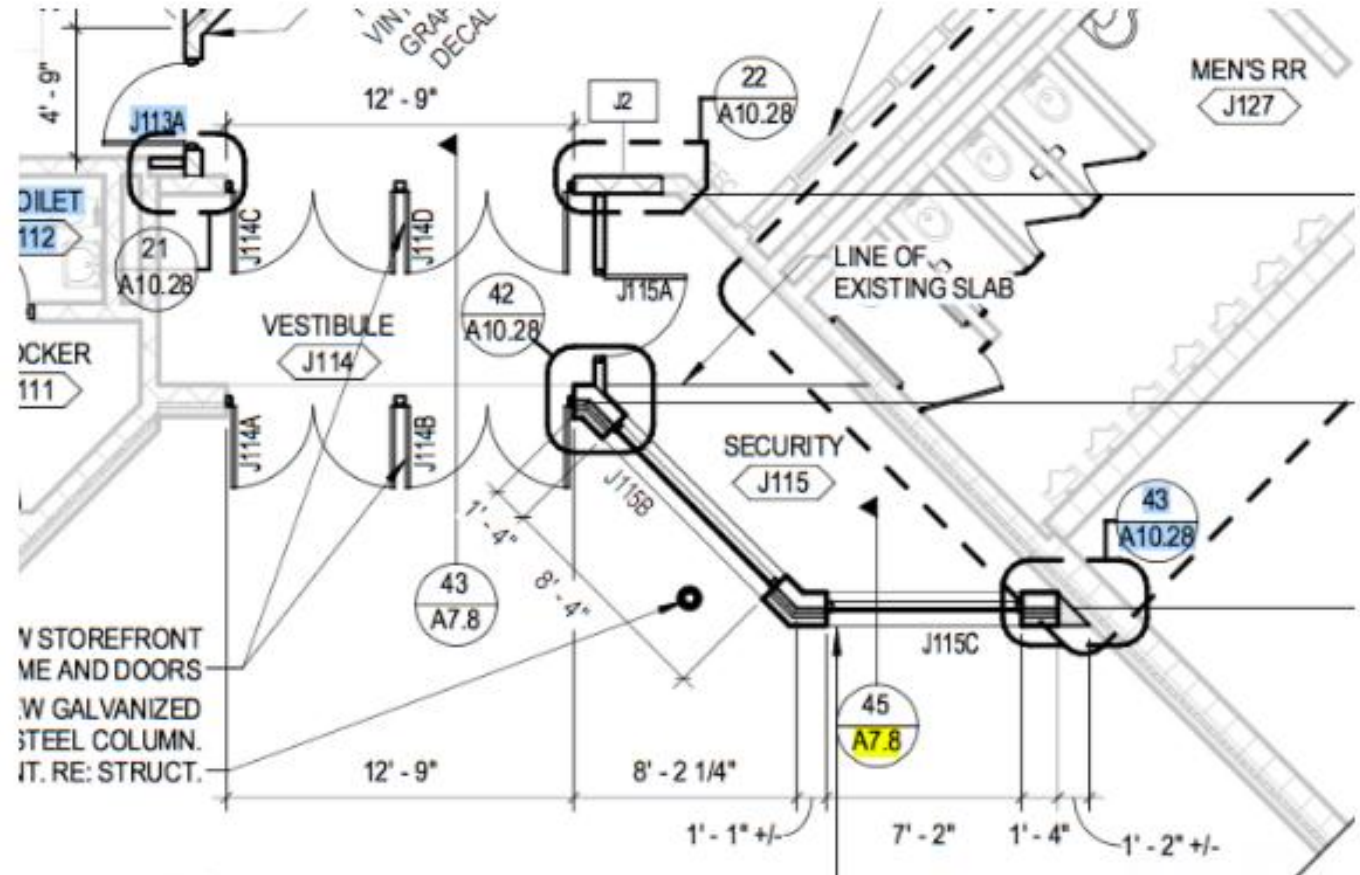
Phase 2 – Crossland Construction

➤ **COR 20 – Plumbing**

- Joist Conflict
- Eye Wash Changes (credit)
- Deletion of Water Heater (credit)
- Daily Grind Ice Machine Plumbing Relocation
- Lavatory Service Panel (LSP) – Science Room
Electric/Gas Controller Teaching Station
- Downspout Boots (credit)
- **Additional Cost of \$408**

Phase 2 – Crossland Construction

- **COR 21 – Security Office**
- Can meet need without office addition
- Savings of \$18,660





Phase 2 – Crossland Construction

- **COR 22 – Downspout Replacement**
 - Existing are original to building
 - Allows for EFIS to be continuous
 - New will match new construction
- **Additional Cost of \$25,711**

Phase 2 – Crossland Construction

➤ **COR 23 – Signage**

- Deletion of Rear External Signage
- Deletion of Some Internal Signage
- Addition of Lit Entry Signage at Commons Entrance
- **Additional Cost of \$5,541**





AV Package – Progressive Electronics

➤ **COR 2 – Audio Visual Changes**

- Refund on Brackets

- Deletion of two rooms

- Addition of one room

- **Savings of \$3,175**

Big Picture

- 28 Change Orders
 - Phase 1 – Lillig Construction
 - 3 Change Orders
 - Additional Cost of \$54,711
 - Phase 2 - Crossland Construction
 - 23 Change Orders
 - Additional Cost of \$60,136
 - Phase 2 AV Package – Progressive Electronics
 - 2 Change Orders
 - Additional Cost of \$2,199
- Original Bid Package (hard costs): \$25,514,366
- Change Orders (approved & pending): \$85,794
- Proposed Budget with Amendments: \$25,600,160