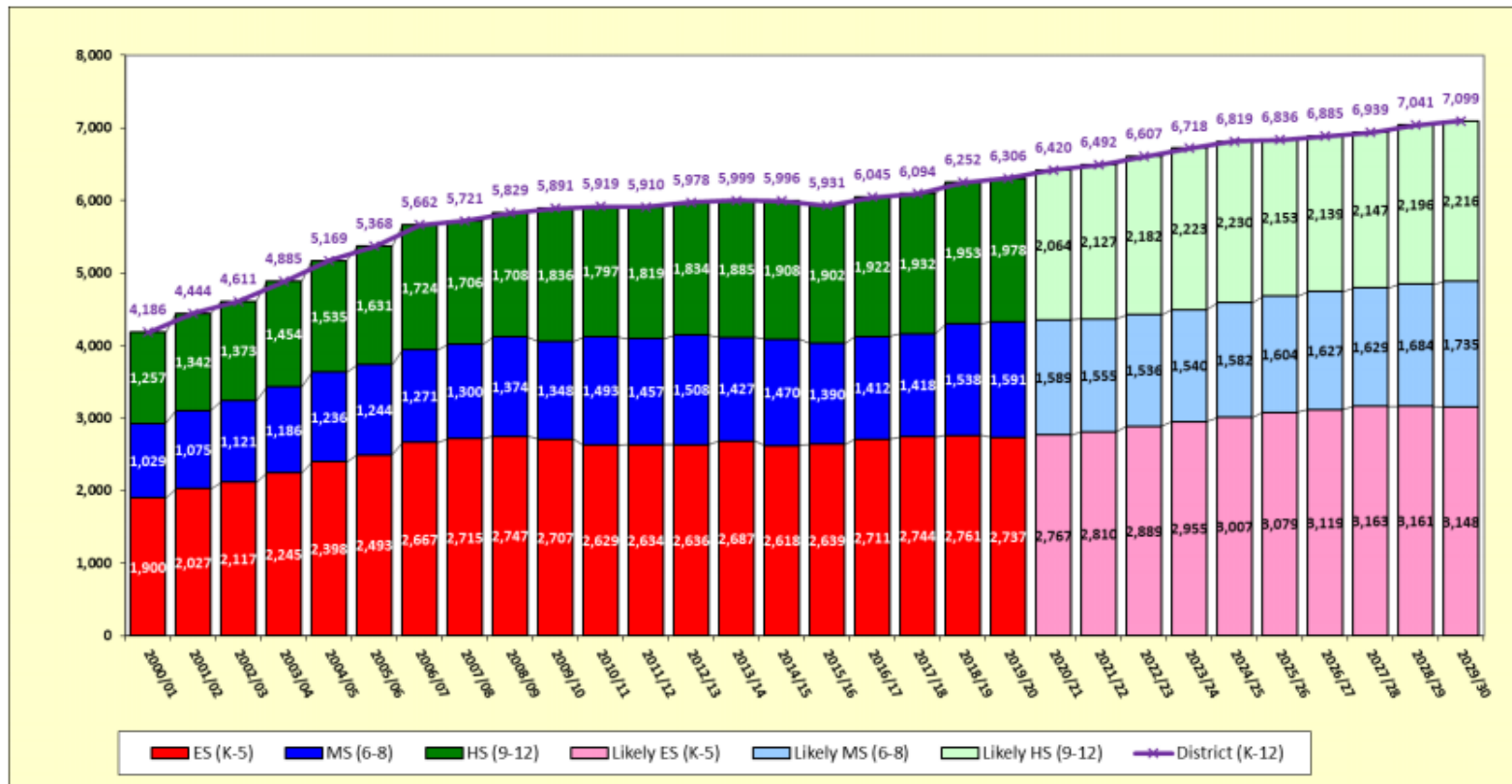


Past, Current, Future Enrollment



Source: Raymore-Peculiar Schools and RSP SFM & Demographic Models

Enrollment Future Described:

- > Enrollment Change – Overall enrollment increase forecasted to have over 7,000 students by 2029/30
- > Next Five Year Enrollment Change Outlook:
 - District increases by just over 500 students (+7.8%) (Annual Range: +1.1% to +1.8% a year)
 - Elementary increases by about 250 students (+9.3%) (Annual Range: +0.9% to +2.8% a year)
 - Middle School decreases by about 10 students (-0.2%) (Annual Range: -2.1% to +2.7% a year)
 - High School increases by nearly 250 students (+12.0%) (Annual Range: +0.3% to +4.2% a year)