


Raymore-Peculiar
April 2021 Bond Planning

Board of Education
December 17, 2020



Timeline

| Date | Action Step |
|-------------------------|---|
| September 2019 | <ul style="list-style-type: none">● Establishment of Priorities● Brainstorming |
| October 2019 | <ul style="list-style-type: none">● Capacity Updates● Financial Scenarios |
| November 2019 | <ul style="list-style-type: none">● Demographer Report |
| December 2019 | <ul style="list-style-type: none">● Refine Options |
| January 2020 | <ul style="list-style-type: none">● Community Feedback Plan● 26 Community Presentations● 685 Surveys Responses |
| February-September 2020 | <ul style="list-style-type: none">● Gather & Review Feedback |
| October 2020 | <ul style="list-style-type: none">● Additional Surveys: 300 Phone & 24 Online● Compile & Summarize Results |
| November 2020 | <ul style="list-style-type: none">● Selection of Architect● Recommendation of Long-Range Facility Plan● Board of Education Approval of LRFP |

Summary of Projects

Additional Capacity at HS Level – Phase 1: Freshman Center

\$42M+/-

- * Expandable to a 9-12 comprehensive high school at some point in future
- * Dedicated area for online instruction
- * Student Activity/Co-Curriculum Improvements

District-Wide Facility Updates at All Schools

\$12M+/-

- * Replace HVAC rooftop units at Eagle Glen, Peculiar, Raymore, Shull, Creekmoor, Bridle Ridge, RPSMS, Innovation Academy, and RPHS
- * Update playgrounds at Peculiar, Creekmoor, and Raymore
- * Replace windows and storefronts at Timber Creek, Stonegate, Peculiar, Raymore, and Shull
- * Renovate or replace roof sections at Eagle Glen, Shull, Stonegate, Timber Creek, South Middle School, Innovation Academy, and RPHS
- * Parking lot renovations at Bridle Ridge, Creekmoor, Shull, Timber Creek, East Middle School, South Middle School, Innovation Academy, Panther Stadium, and ASC

Student Facility Needs

\$10M+/-

- **Performing Arts Center:**
 - * Design and build a PAC with no less than 700 seats at RPHS
 - * Supports programs with large number of participants

Student Curricular Needs

\$8M+/-

- **Additional Career Oriented Education Programming**
 - * Provide space for more career opportunities for students
 - * Increase Real-World Learning opportunities HVAC, Electrical, etc.

\$72 Million Investment
No-Tax Rate Increase

Additional Capacity at High School Level - \$42M

- Effective capacity of current facility surpassed by 2023
- Space available at EMS Campus
 - School and Ancillary Facilities
- Phase One - Freshman Center
 - Expandable to 9-12 School in Future

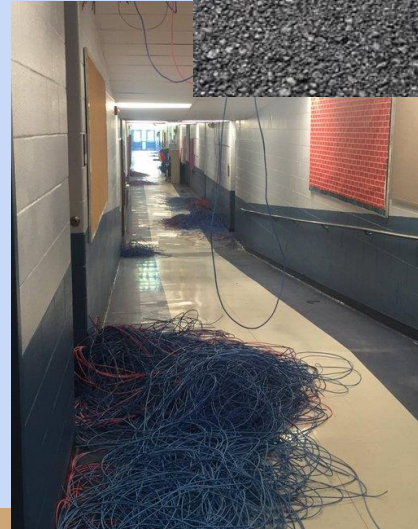




Ray-Pec Freshman Center

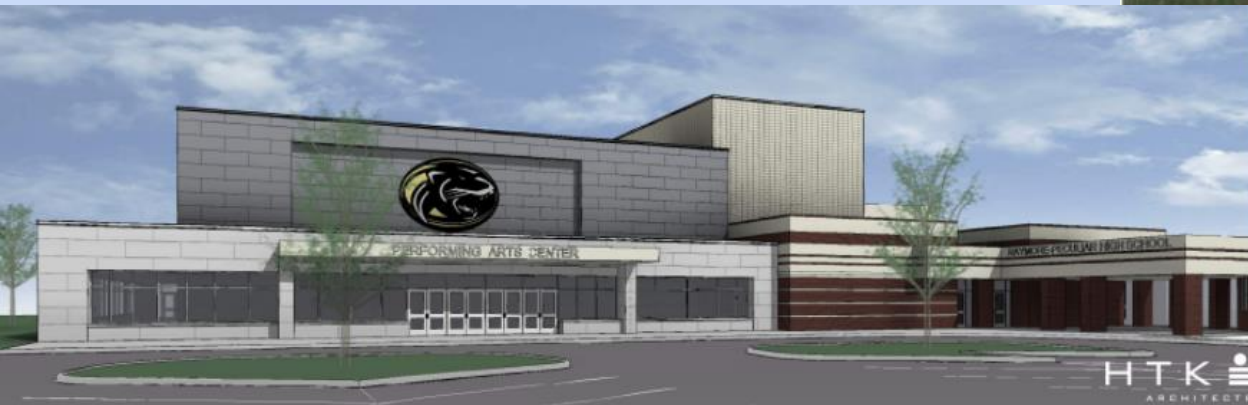
School Maintenance and Infrastructure - \$12M

- Investment in current assets
- Driven by a needs analysis
- Every school sees upgrades
- Bond funds in addition to Prop RP funds
- Infrastructure
 - Roofs and HVAC
 - Parking Lots
 - Doors and Windows
 - Safety and Security
 - Mechanical Systems
 - Technology
 - Flooring and Painting
 - Equipment
 - ADA Compliance



Performing Arts Center - \$10M

- Current facility lacks capacity
- Fine Arts programs limited due to space
- Supports programs with large number of participants:
 - Band
 - Choir
 - Orchestra
 - Theater



Career Oriented Education - \$8M

College and Career Ready:

- Machining
- HVAC
- Electrical
- Plumbing
- Cosmetology
- Nursing/Health Clinic

Market Value Assets:

- Robotics
- Drone Operation
- Coding and Technology
- Culinary

Summary of Projects

Additional Capacity at HS Level – Phase 1: Freshman Center

\$42M+/-

- * Expandable to a 9-12 comprehensive high school at some point in future
- * Dedicated area for online instruction
- * Student Activity/Co-Curriculum Improvements

District-Wide Facility Updates at All Schools

\$12M+/-

- * Replace HVAC rooftop units at Eagle Glen, Peculiar, Raymore, Shull, Creekmoor, Bridle Ridge, RPSMS, Innovation Academy, and RPHS
- * Update playgrounds at Peculiar, Creekmoor, and Raymore
- * Replace windows and storefronts at Timber Creek, Stonegate, Peculiar, Raymore, and Shull
- * Renovate or replace roof sections at Eagle Glen, Shull, Stonegate, Timber Creek, South Middle School, Innovation Academy, and RPHS
- * Parking lot renovations at Bridle Ridge, Creekmoor, Shull, Timber Creek, East Middle School, South Middle School, Innovation Academy, Panther Stadium, and ASC

Student Facility Needs

\$10M+/-

- **Performing Arts Center:**
 - * Design and build a PAC with no less than 700 seats at RPHS
 - * Supports programs with large number of participants

Student Curricular Needs

\$8M+/-

- **Additional Career Oriented Education Programming**
 - * Provide space for more career opportunities for students
 - * Increase Real-World Learning opportunities HVAC, Electrical, etc.

\$72 Million Investment
No-Tax Rate Increase